



# ALASKA DIVISION OF HOMELAND SECURITY & EMERGENCY MANAGEMENT

## SITUATION REPORT 23-146 • MAY 26, 2023



Toll-Free 1.800.478.2337

Anchorage Area 907.428.7000

SEOC 907.428.7100

<b>SEOC Preparedness Level</b> Level 3 – Active Incident Response	<a href="http://ready.alaska.gov">http://ready.alaska.gov</a>	<b>National Terrorism Advisory System:</b>  <a href="#">Read the NTAS Bulletin here</a>
<b><a href="#">Maritime Security (MARSEC)</a></b> Level: 1-Minimum Appropriate Security Measures	<b>WHO Novel Coronavirus Pandemic (COVID-19):</b>  <a href="#">2019 Novel Coronavirus</a>	<b>Alaska Military Installation Force Protection Level:</b> FPCON Bravo

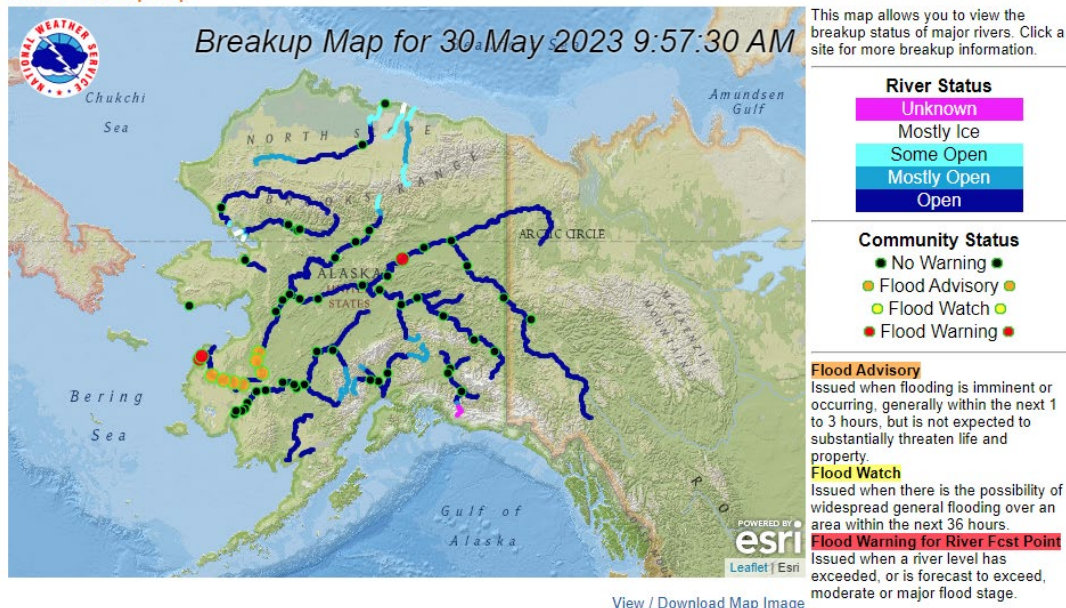
(Significant changes from previous situation reports are red.)

### Significant Issues:

#### **2023 Spring Flood Event and River Watch:**

The SEOC continues supporting local communities in their response. A new incident situation report will be published tonight.

APRFC Breakup Map



For the most up to date information and daily break up summary click the following link, <https://www.weather.gov/aprfc>. At this time, there will be no separate river watch situation report.

### State of Alaska Department of Health (DOH)

The DOH stands ready to assist with all aspects of public health and in the event of a public health emergency, supported by the SEOC and other state departments as required. For current information, see:

<https://health.alaska.gov/dph/Pages/default.aspx>

<https://health.alaska.gov/dph/Emergency/Pages/prepared/default.aspx>

## **NTAS Bulletin**

The U.S. Department of Homeland Security has issued an updated National Terrorism Advisory Bulletin. The updated bulletin can be viewed at the below link.

To read current or expired advisories, click the link below:

<https://www.dhs.gov/national-terrorism-advisory-system>

## **Travel Alerts and Conditions**

For current driving conditions dial 511 or link to <https://511.alaska.gov/>

## **Barry Arm Landslide / Tsunami Risk**

For the latest information on the Barry Arm Landslide and Tsunami risk, click here:

[DGGs Barry Arm Landslide and Tsunami Hazard](#)

## **Recent Earthquakes**

USGS Earthquake Information: <http://earthquake.usgs.gov/>

National Tsunami Warning Center: <http://tsunami.gov/>

## **Alaska Volcanoes**

**Great Sitkin** Alert Level: **Watch** and Aviation Color Code: **Orange**

**Aniakchak** Alert Level: **Advisory** and Aviation Color Code: **Yellow**

**Semisopchnoi** Alert Level: **Advisory** and Aviation Color Code: **Yellow**

**Takawangha** Alert Level: **Advisory** and Aviation Color Code: **Yellow**

**Tanaga** Alert Level: **Advisory** and Aviation Color Code: **Yellow**

**Trident** Alert Level: **Advisory** and Aviation Color Code: **Yellow**

For Alaska Volcano updates, go to: <https://www.avo.alaska.edu/>

## **Air Quality Index (AQI) Advisories**

For the most up to date Air Quality Index Advisories:

<http://dec.alaska.gov/Applications/Air/airtoolsweb/Home/Index>

## **Spills of Oil and Hazardous Substances**

The ADEC Spill Prevention and Response page is located at:

<http://dec.alaska.gov/spar/ppr/spill-information/response/>

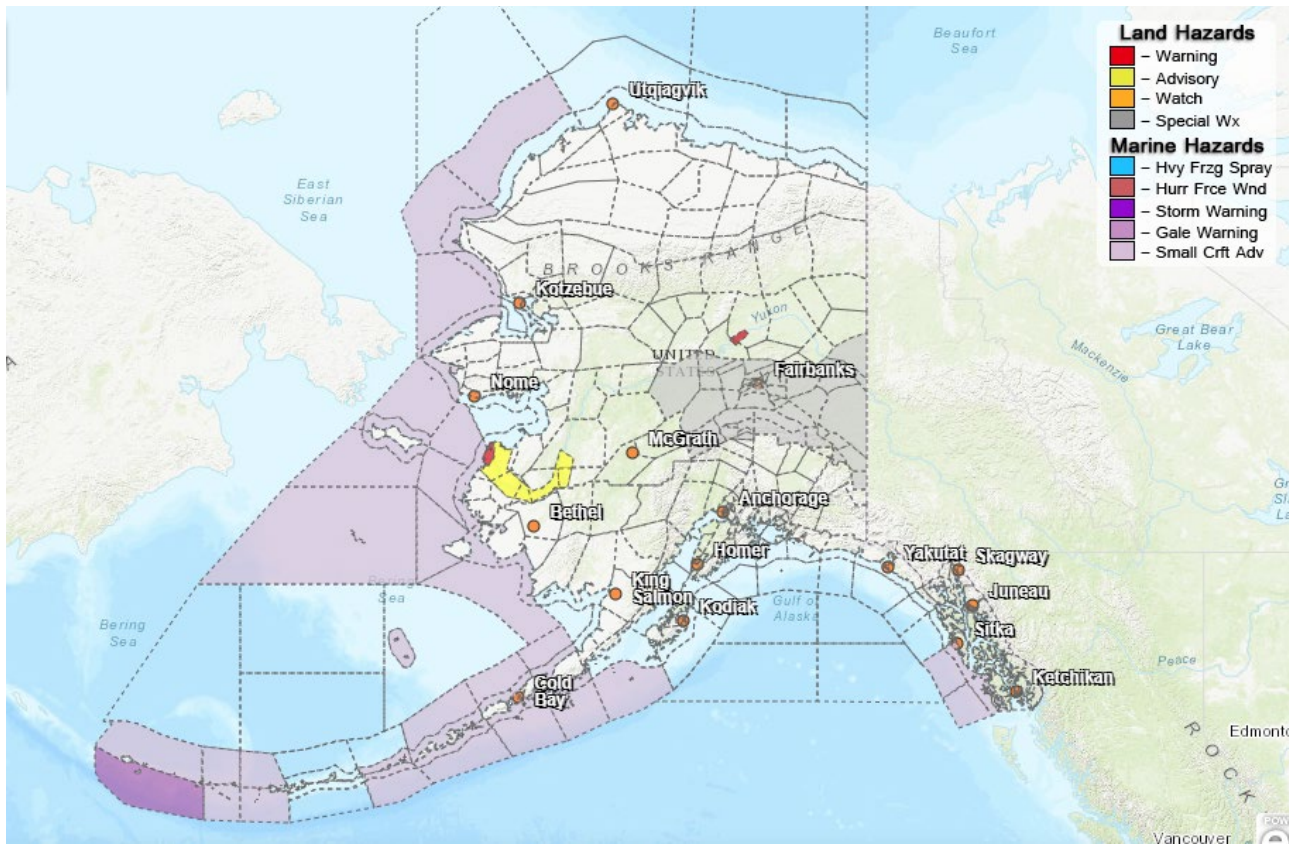
## **Alaska Cyber Security Information**

State Employees may sign up for cyber security notifications and alerts at

<https://oit.alaska.gov/security>

CISA-Cybersecurity Services and Tools: [www.cisa.gov/free-cybersecurity-services-and-tools](http://www.cisa.gov/free-cybersecurity-services-and-tools)

## **Significant Weather:**



**The following Flood Warnings are in effect:**

- **Yukon Delta** – Ice jam flooding continues for communities of Emmonak and Alakanuk along the Yukon River and Delta through 6:00PM Tuesday.
- **Stevens Village** - Flooding of low-lying area is occurring. Some roads are inundated with water, including over a foot or more of water over the airport access road. Homes and other structures in lower parts of the village may have water surround or flood them through 6:00PM Tuesday.

**The following Flood Advisories are in effect:**

- **Lower Yukon River and associated tributaries from Grayling downstream to the Yukon Delta as far as Nunam Iqua and Kotlik** - Backwater from recent ice jams between Russian Mission and Mountain Village as well as snow melt moving down from the Upper Yukon has led to extensive overbank flooding of lowlands on the Lower Yukon River from Grayling down to Mountain Village, as well as down the Innoko River at Shageluk.

**The following Special Weather Statements are in effect:**

- **Central Interior; Middle Tanana Valley; Deltana and Tanana Flats; Upper Tanana Valley and the Fortymile Country; Denali; Eastern Alaska Range** - Periods of Rainfall and Cooler Temps Continue through Wednesday

For more information and the most current weather, go to: <http://www.weather.gov/arh>.

**Avalanche Forecast:**

A current avalanche forecast has not been issued for the following areas: Valdez, Haines, Cordova area, Turnagain Pass or Hatcher Pass.

Check the Avalanche Forecast Center closest to your area for the most up to date information on avalanche potential. <https://alaskasnow.org> or <https://www.weather.gov/afc/avalancheweather>

**The Next Situation Report:** will be **31 May 2023**. A significant change in the situation or the threat level will prompt an interim report. This report is posted on the internet at <https://ready.alaska.gov/sitrep>.

To register for email distribution, go to <http://list.state.ak.us/mailman/listinfo/dhsem.situation.report>. Direct questions regarding this report to the SEOC at 907-428-7100 or [seoc@alaska.gov](mailto:seoc@alaska.gov)